

RICH VALLEY TOWNSHIP

Each township has six files containing six sections in each, and one file containing all 36 sections.

RichValley01to06.pdf
RichValley07to12.pdf
RichValley13to18.pdf
RichValley19to24.pdf
RichValley25to30.pdf
RichValley31to36.pdf
RichValleyAll36.pdf

The points are listed starting with the point above the SE corner and continuing in a counter-clockwise rotation around the section. This normally begins with the East point, Northeast, then North, but may also include Witness Corners, and/or Meander Corners.

Definitions

Witness Corner: A witness corner “stands in” when the true corner cannot be monumented or occupied because of difficult terrain or obstruction of the corner sight. The witness corner must be on the section line and is usually 5 or 10 chains away from the true corner.

Meander Corner: The intersection of a township, range, or section line and the banks of a navigable stream or meandering body of water.

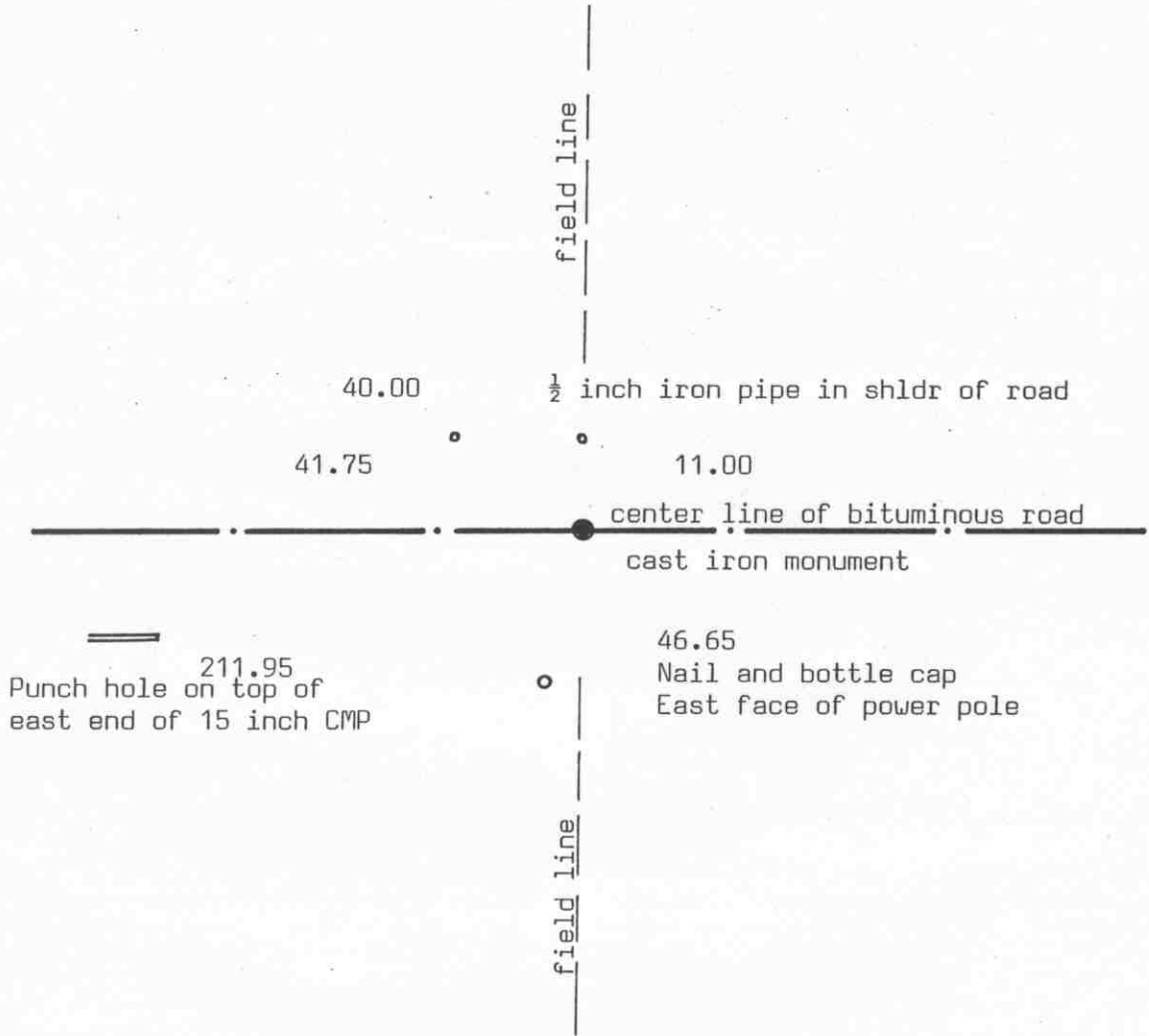
EAST QUARTER corner, Section 19, Township 116 North, Range 28 West

Certificate of Location of Government Corner

SKETCH OF REFERENCE TIES (NO SCALE)

SECTION 19

SECTION 20



Statement of evidence relative to this corner location on sheet 2

I hereby certify that this document was prepared by me or under my direct supervision.

Willard Pellinen
Willard Pellinen
McLeod County Surveyor
License No. 9626

Date Dec. 22, 1993

OFFICE OF THE COUNTY RECORDER
MCLEOD COUNTY, MINNESOTA.

I hereby certify that this document was filed in this office at 9 o'clock A.M. on the 23rd day of December, 1993.

Carmen Estlin Muller, County Recorder

By _____, Deputy

Document No. 256691

Certificate of Location of Government Corner

September, 1856. D. L. Langton of the General Land Office established this corner. He set a post and marked 2 aspens for bearing trees.

Old county highway right of way plans show the quarter corner to be on the center line of the county highway.

October 30, 1986. We set a $\frac{1}{2}$ inch diameter iron pipe along the center line of the east-west road on a straight line between the section corners and took available reference ties.

June 18, 1987. We set a McLeod County cast iron monument with a $\frac{1}{2}$ inch diameter iron pipe below it.

The adjoining land owners agree the center line of the road is the quarter line.

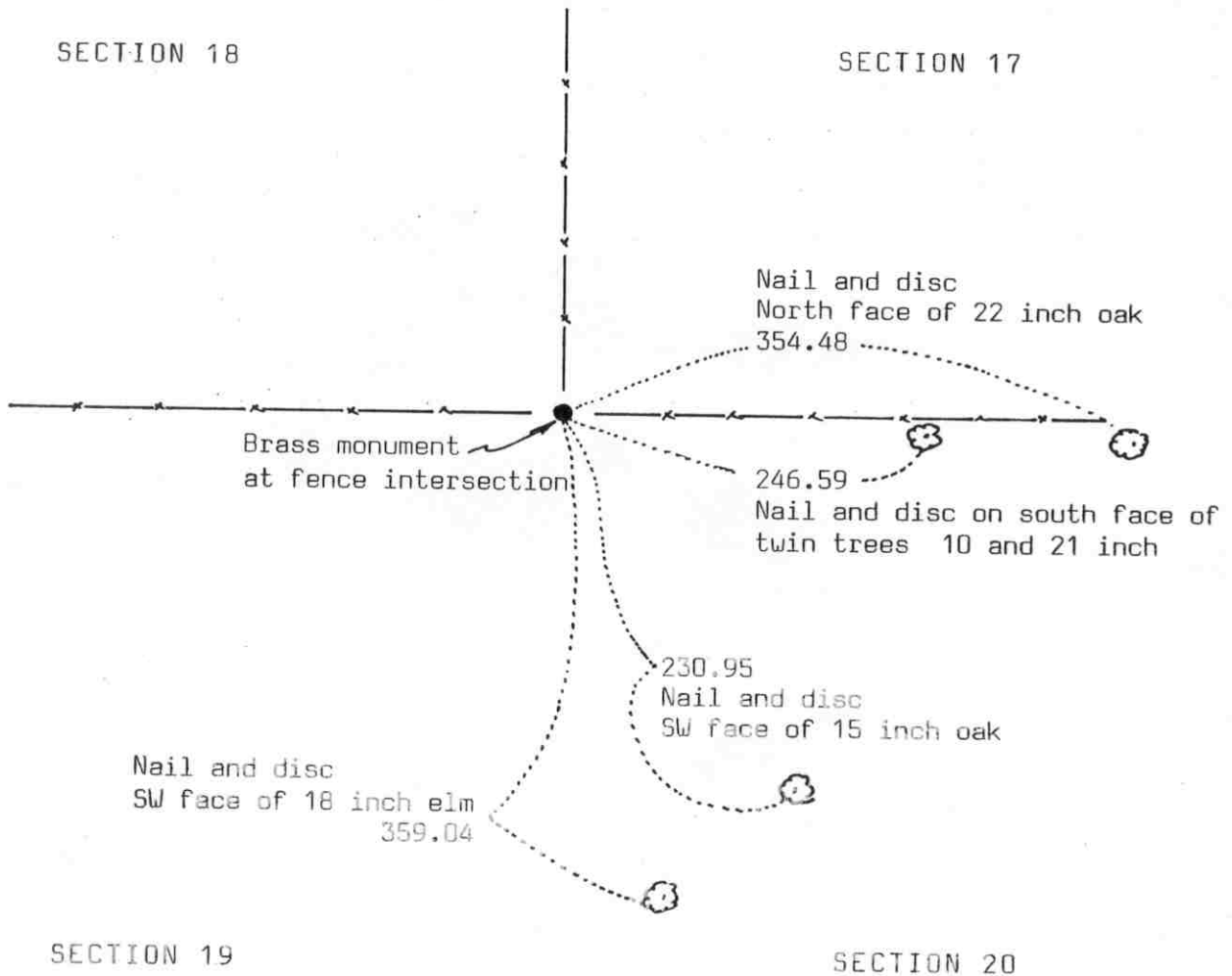
The corner falls on the extensions of field lines from the north and south.

October 26, 1993. We found the monument in good condition and took new reference ties.

NORTHEAST corner, Section 19, Township 116 North, Range 28 West

Certificate of Location of Government Corner

SKETCH OF REFERENCE TIES (NO SCALE)



Statement of evidence relative to this corner location on sheet 2

I hereby certify that this document was prepared by me or under my direct supervision.

Willard Pellinen
 Willard Pellinen
 McLeod County Surveyor
 License No. 9626

Date July 18, 1990.

OFFICE OF THE COUNTY RECORDER
 MCLEOD COUNTY, MINNESOTA.

I hereby certify that this document was filed in this office at 9 o'clock A. M. on the 25th day of July, 1990.

Carmen Ostlie, County Recorder

By _____, Deputy

Document No. 234580

NORTHEAST corner, Section 19, Township 116 North, Range 28 West

Certificate of Location of Government Corner

September, 1856. D.L.Langton of the General Land Office set a post at the corner and marked 2 elms and 2 lindens for bearing trees.

November, 1925. Survey field notes by E.L.Higgins show a 2 inch diameter iron pipe with a brass top at the corner. He shows a distance of 2654.5 feet to the north quarter corner of Section 20 and distance of 2625.4 feet to the east quarter corner of Section 18.

1967. McCombs Knutson Associates (Dickman Knutson, county surveyor) found the pipe with the brass top and took reference ties.

June 27, 1979. Knutson took new reference ties to the corner.

We measured 2652.89 feet to the north quarter corner of Section 20 compared with 2654.5 by Higgins in 1925 and we measured 2623.46 feet to the east quarter corner of Section 18 compared with 2625.4 by Higgins.

June 20, 1989. We found the brass monument in good condition.

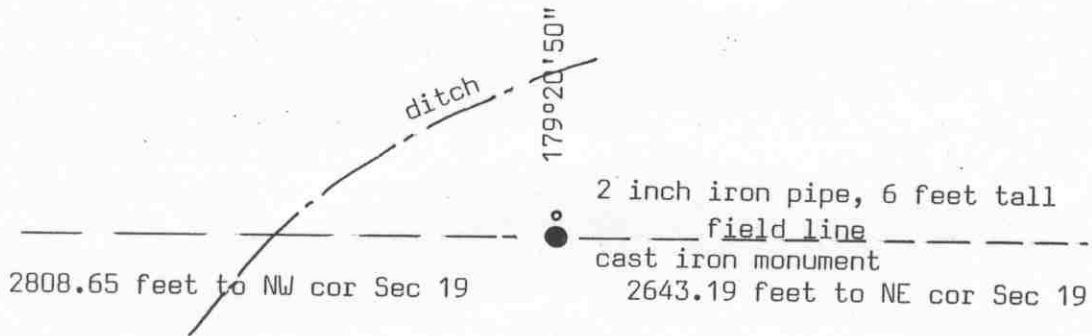
The found monument at the fence intersection has perpetuated the correct location of the section corner.

NORTH QUARTER corner, Section 19, Township 116 North, Range 28 West

Certificate of Location of Government Corner

SKETCH OF REFERENCE TIES
(NO SCALE)

SECTION 18



SECTION 19

Statement of evidence relative to this corner location on sheet 2

I hereby certify that this document was prepared by me or under my direct supervision.

Willard Pellinen
Willard Pellinen
McLeod County Surveyor
License No. 9626

Date Dec. 22, 1993

OFFICE OF THE COUNTY RECORDER
MCLEOD COUNTY, MINNESOTA.

I hereby certify that this document was filed in this office at 9 o'clock A. M. on the 23rd day of December, 1993.

Armen Billie Mulder, County Recorder

By _____, Deputy

Document No. 256692

Certificate of Location of Government Corner

September, 1856. D. L. Langton of the General Land Office established this corner. He set a post and marked 2 aspens for bearing trees.

September 14, 1981. Theodore Ondrachek, 92 years old, and had lived in the Southwest Quarter of Section 18 all his life, said fences used to run east-west-north from the quarter corner. He said the field lines are now where the fences used to be. Alvin Ondrachek, 62 years old, and had lived in the Southeast Quarter of Section 18 all his life said there is now a post where the fence corner used to be. Post was set by John Pollman when the fence was taken down. Mr. Pollmann owns the Southeast Quarter of the Southwest Quarter of Section 18.

September 22, 1981. We found the post and replaced it with a McLeod County cast iron monument. This corner is within 6 feet of being on a proration of the government distances to the northwest and northeast corners of Section 19.

October 26, 1993. We found the monument in good condition and checked the ties.

Certificate of Location of Government Corner

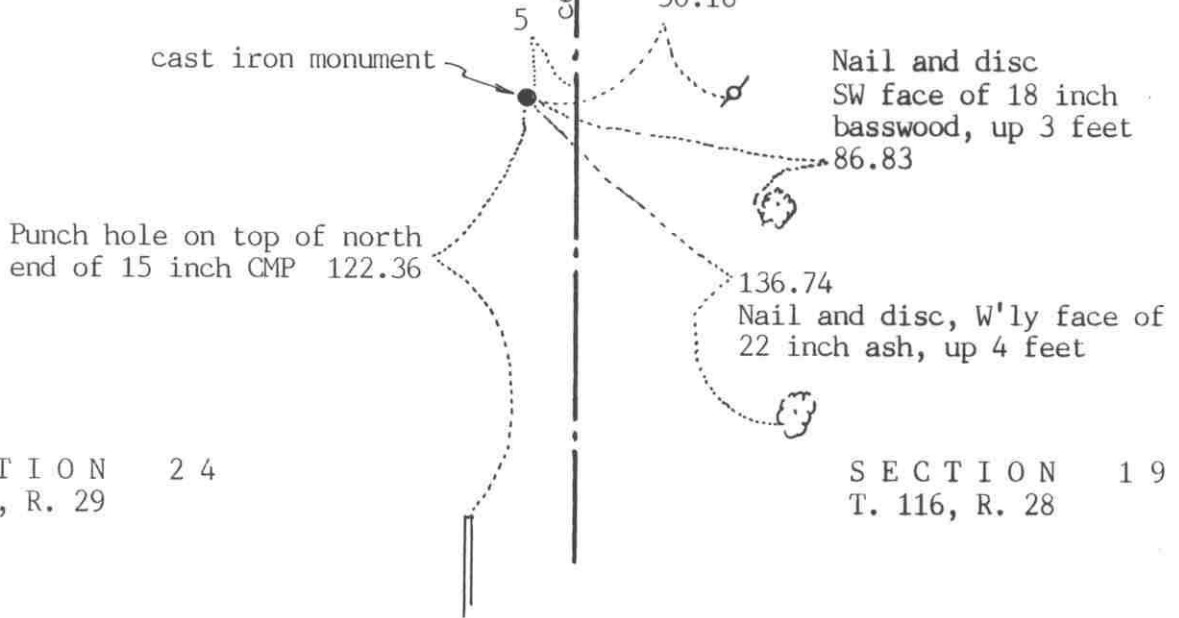


SKETCH OF REFERENCE TIES
(NO SCALE)

SECTION 13
T. 116, R. 29

SECTION 18
T. 116, R. 28

center line of gravel road



SECTION 24
T. 116, R. 29

SECTION 19
T. 116, R. 28

Statement of evidence relative to this corner location on sheet 2

I hereby certify that this document was prepared by me or under my direct supervision.

Willard Pellinen
Willard Pellinen
McLeod County Surveyor
License No. 9626

Date July 4, 1991

OFFICE OF THE COUNTY RECORDER
MCLEOD COUNTY, MINNESOTA.

I hereby certify that this document was filed in this office at 9 o'clock A.M. on the 10th day of July, 1991.

Carmen Otis, County Recorder
By _____, Deputy

Document No. 239857

NORTHEAST corner, Section 24, Township 116 North, Range 29 West

Certificate of Location of Government Corner

1855. John Ryan of the General Land Office set a post and marked 4 trees for bearing trees.

December 8, 1920. Old survey notes show an I.P. at the corner.

19??. County Highway Department field notes show an iron pin at the corner.

April 17, 1970. McCombs Knutson Associates (Dickman Knutson, county surveyor) dug for the corner, John Tupa from Hutchinson with a backhoe. Down 2 feet below the road surface they found a steel peg, 1 inch square on top. Beside the peg they found an iron pin and a wood stake. They took reference ties.

October 13, 1970. Knutson set a McLeod County cast iron monument and took additional ties.

June 5, 1990. We found the monument in good condition down 6 inches below the surface and checked the reference ties. We measured 2621.17 feet to the east quarter corner of Section 24, compared with a distance of 1619.5 by the county highway department in 19??. We measured 5263.89 to the northeast corner of Section 13, compared with 5264.1 by the highway department.

We accept the iron pin and peg found by Knutson as having perpetuated the correct location of the section corner.

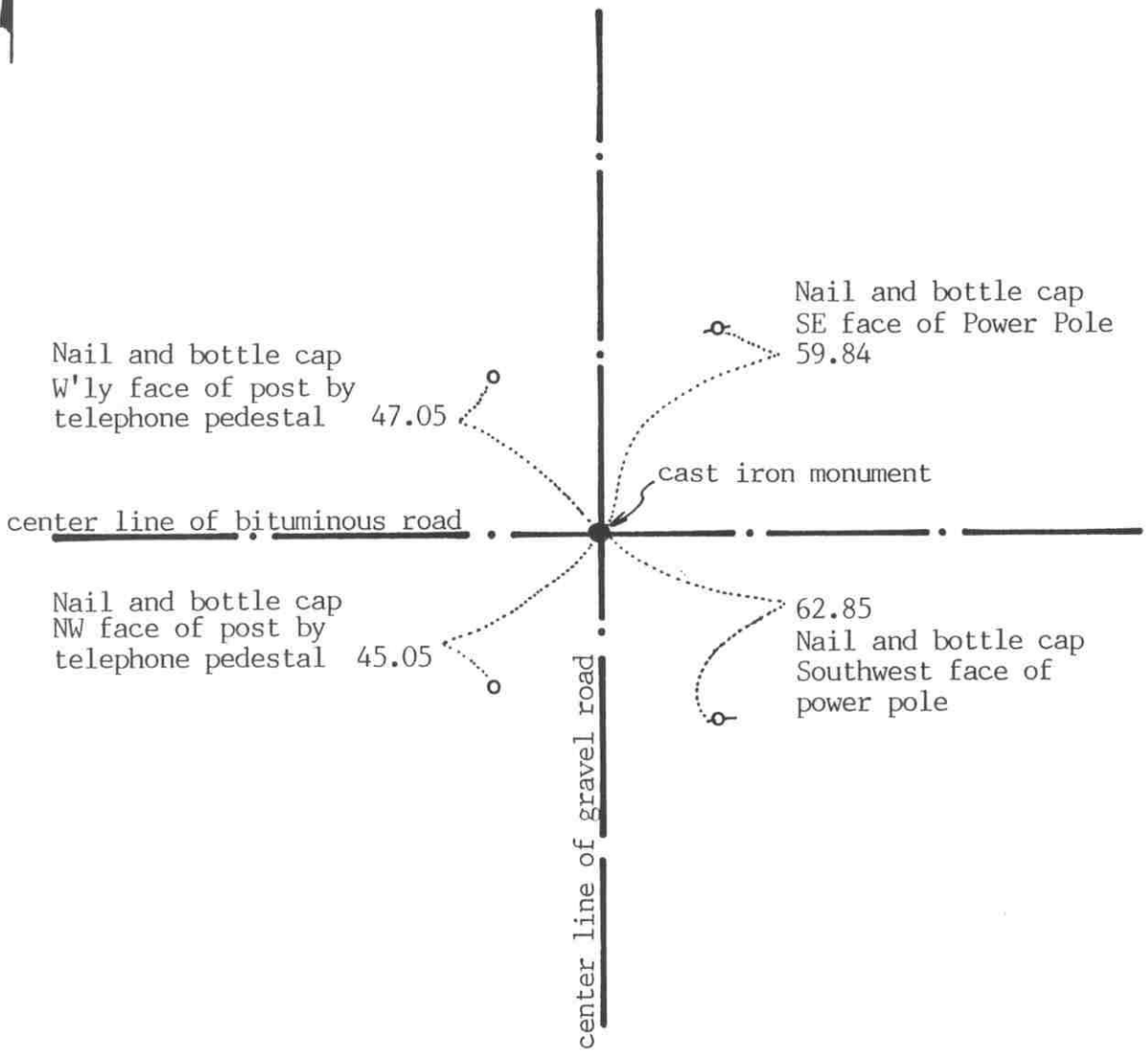
Certificate of Location of Government Corner

SKETCH OF REFERENCE TIES

(NO SCALE)

SECTION 24 T.116 R.29

SECTION 19 T.116 R.28



Statement of evidence relative to this corner location on sheet 2

I hereby certify that this document was prepared by me or under my direct supervision.

Willard Pellinen

Willard Pellinen
McLeod County Surveyor
License No. 9626

Date Nov. 22, 1992

OFFICE OF THE COUNTY RECORDER
MCLEOD COUNTY, MINNESOTA.

I hereby certify that this document was filed in this office at 9 o'clock A.M. on the 24th day of November, 1992.

Carmen Estelle F. Jilder County Recorder

By _____, Deputy

Document No. 249056

EAST QUARTER corner, Section 24, Township 116 North, Range 29 West

Certificate of Location of Government Corner

1855. This corner was originally established by the General Land Office. John Ryan set a post and marked two 6 inch aspens for bearing trees.

December 8, 1920. E.L.Higgins, surveyor, measured 2626 feet to the northeast corner and 2637 feet to the southeast corner of Section 24.

August 27, 1970. McCombs Knutson Associates (Dickman Knutson, county surveyor) found 3 spikes at the corner. The third spike was down 1 foot. These were probably set by the county highway department. Knutson found nothing else. Knutson set reference ties and set a McLeod County cast iron monument at the corner.

July 17, 1987. We found the monument ok and set new reference ties.

June 18, 1990. We checked the reference ties.

The monument set by Knutson is accepted as marking the quarter corner. It fits occupation lines, the center line intersection of the roads. We measured 2637.6 feet to the southeast corner of the section compared with the 1920 distance of 2637 feet. We measured 2621.17 feet to the northeast corner. The corner is 8.21 feet north of a split between the section corners and 21.13 feet east of a straight line between the corners.

EAST QUARTER corner, Section 20, Township 116 North, Range 28 West

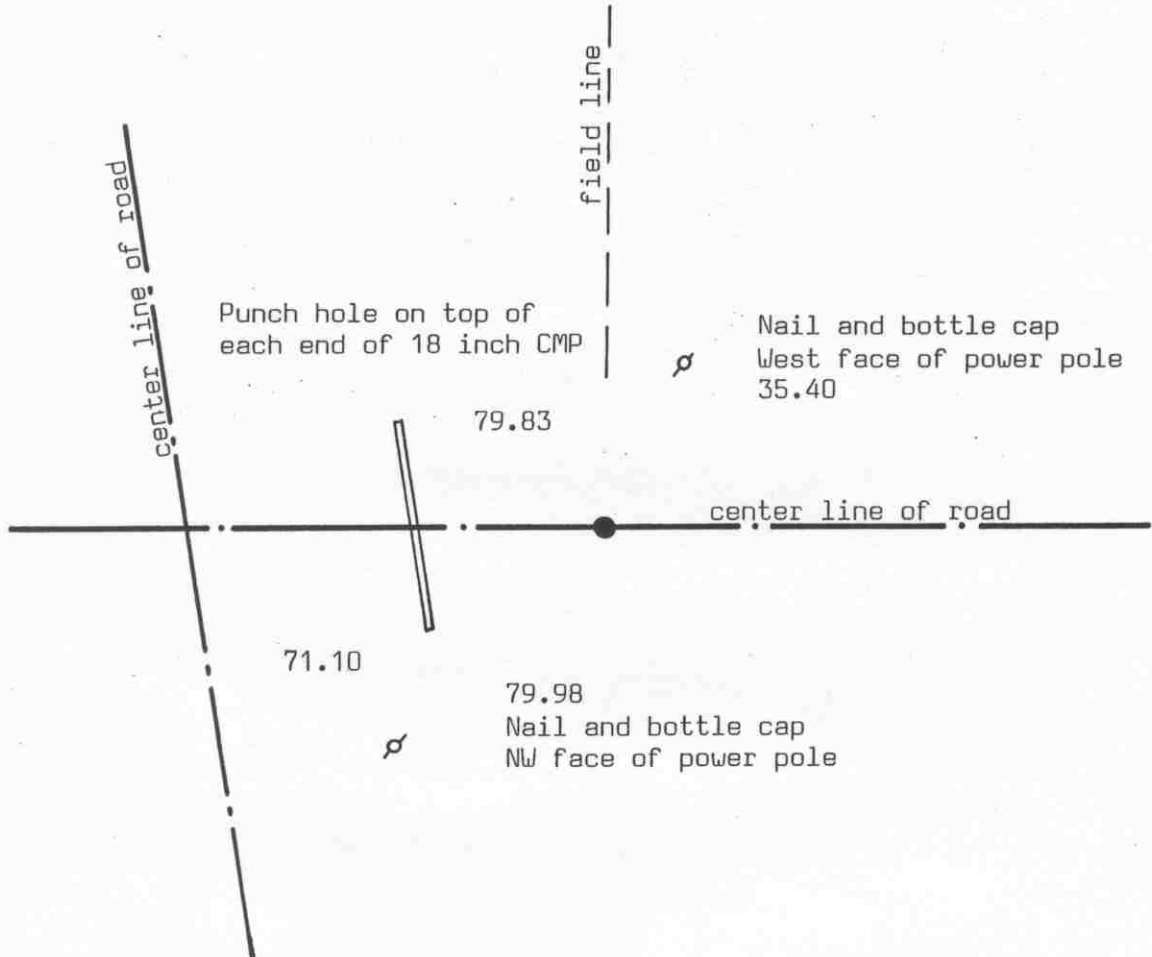
Certificate of Location of Government Corner

SKETCH OF REFERENCE TIES

(NO SCALE)

SECTION 20

SECTION 21



Statement of evidence relative to this corner location on sheet 2

I hereby certify that this document was prepared by me or under my direct supervision.

Willard Pellinen

Willard Pellinen
McLeod County Surveyor
License No. 9626

Date December 23, 1993

OFFICE OF THE COUNTY RECORDER
MCLEOD COUNTY, MINNESOTA.

I hereby certify that this document was filed in this office at 9 o'clock A.M. on the 23rd day of December, 1993.

Armond Estlin Mulder County Recorder

By _____, Deputy

Document No. 256693

EAST QUARTER corner, Section 20, Township 116 North, Range 28 West

Certificate of Location of Government Corner

September, 1856. D. L. Langton of the General Land Office established this corner. He set a post and marked 2 elms for bearing trees.

March 21, 1966. Roy Hansen, surveyor, found an iron pipe on the center line of the east-west road in line with a fence to the north.

May 24, 1979. We found a 3/4 inch diameter iron pipe down 10 inches below the surface of the bituminous road. This was in line with a tree line to the north. We took available ties.

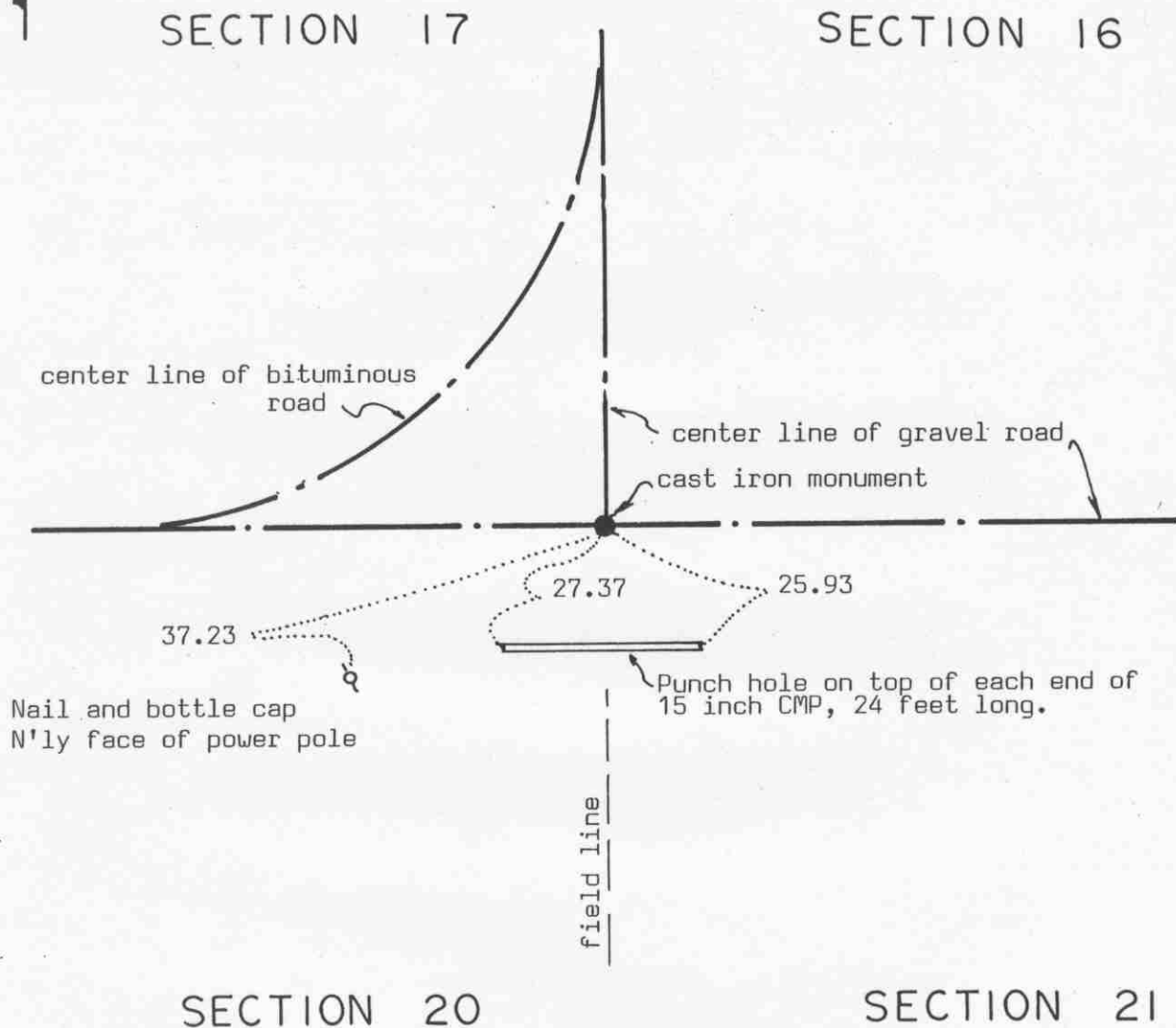
August 30, 1985. We found the iron pipe down 2 feet below the surface of the road. We took additional ties and set a McLeod County cast iron monument over the pipe, flush with the surface of the bituminous road.

October 26, 1993. We found the monument in good condition and checked the reference ties.

NORTHEAST corner, Section 20, Township 116 North, Range 28 West

Certificate of Location of Government Corner

SKETCH OF REFERENCE TIES
(NO SCALE)



Statement of evidence relative to this corner location on sheet 2

I hereby certify that this document was prepared by me or under my direct supervision.

Willard Pellinen
Willard Pellinen
McLeod County Surveyor
License No. 9626

Date Dec. 20, 1993.

OFFICE OF THE COUNTY RECORDER
MCLEOD COUNTY, MINNESOTA.

I hereby certify that this document was filed in this office at 9 o'clock A.M. on the 21st day of January, 1994.

Carmen Estlie Mulder County Recorder

By _____, Deputy

Document No. 257381

Certificate of Location of Government Corner

September, 1856. D. L. Langton of the General Land Office established this corner. He set a post and marked a cherry tree and 3 aspens for bearing trees.

April 28, 1926. Carlisle Madson, Sr., county surveyor, set a pipe with a brass cap at the corner.

April 10, 1979. We found the iron pipe with a brass cap down 16 inches below the surface of the road. We tied it off and set a $\frac{1}{2}$ inch diameter iron pipe over it.

June 25, 1979. We set a McLeod County cast iron monument over the pipe with the brass cap.

October 26, 1993. We found the monument in good condition down 4 inches below the surface of the gravel road and took new reference ties.

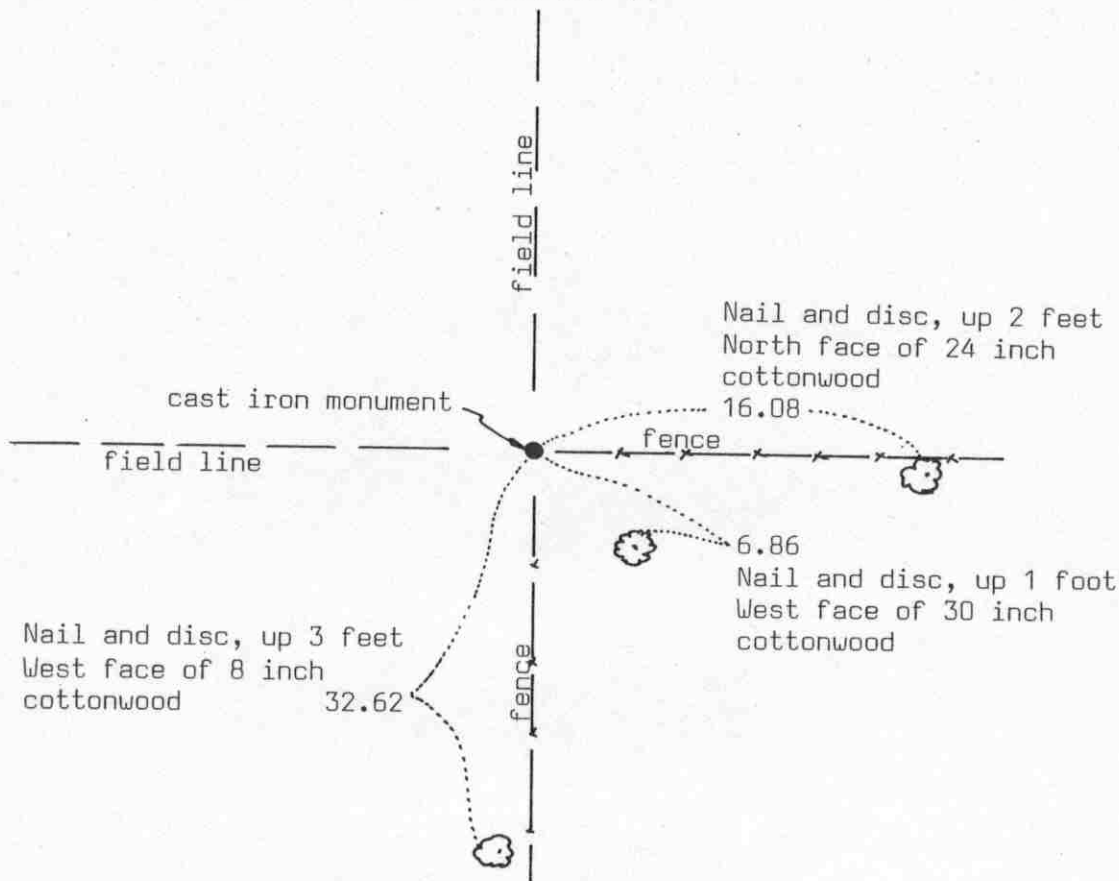
NORTH QUARTER corner, Section 20, Township 116 North, Range 28 West

Certificate of Location of Government Corner

SKETCH OF REFERENCE TIES

(NO SCALE)

SECTION 17



SECTION 20

Statement of evidence relative to this corner location on sheet 2

I hereby certify that this document was prepared by me or under my direct supervision.

Willard Pellinen
Willard Pellinen
McLeod County Surveyor
License No. 9626

Date July 20, 1990

OFFICE OF THE COUNTY RECORDER MCLEOD COUNTY, MINNESOTA.

I hereby certify that this document was filed in this office at 2 o'clock P.M. on the 23rd day of July, 19 90.

Carmen Ostlie, County Recorder

By _____, Deputy

Document No. 234561

Certificate of Location of Government Corner

September, 1856. This corner was established by D.L. Langton of the General Land Office. He set a post and had reference ties to 2 bearing trees.

November, 1925. Survey notes by E.L.Higgins show he found a stone and an iron bar at the corner. He had a distance of 2654.5 feet to the northwest corner of Section 20.

1967. McCombs Knutson Associates (Dickman Knutson, county surveyor) found an iron bar at the corner, fences running east and south, field lines north and west.

June 27, 1979. We set a McLeod County cast iron monument at the fence intersection, top flush with the ground.

October, 1986. We measured 2652.89 feet to the northwest corner of Section 20 compared with 2654.5 by Higgins in 1925.

June 20, 1989. We found the monument in good condition but no reference ties remaining. We took new ties.

We believe the iron bar found in 1967 was the same iron bar found by Higgins in 1925.

EAST QUARTER corner, Section 21, Township 116 North, Range 28 West

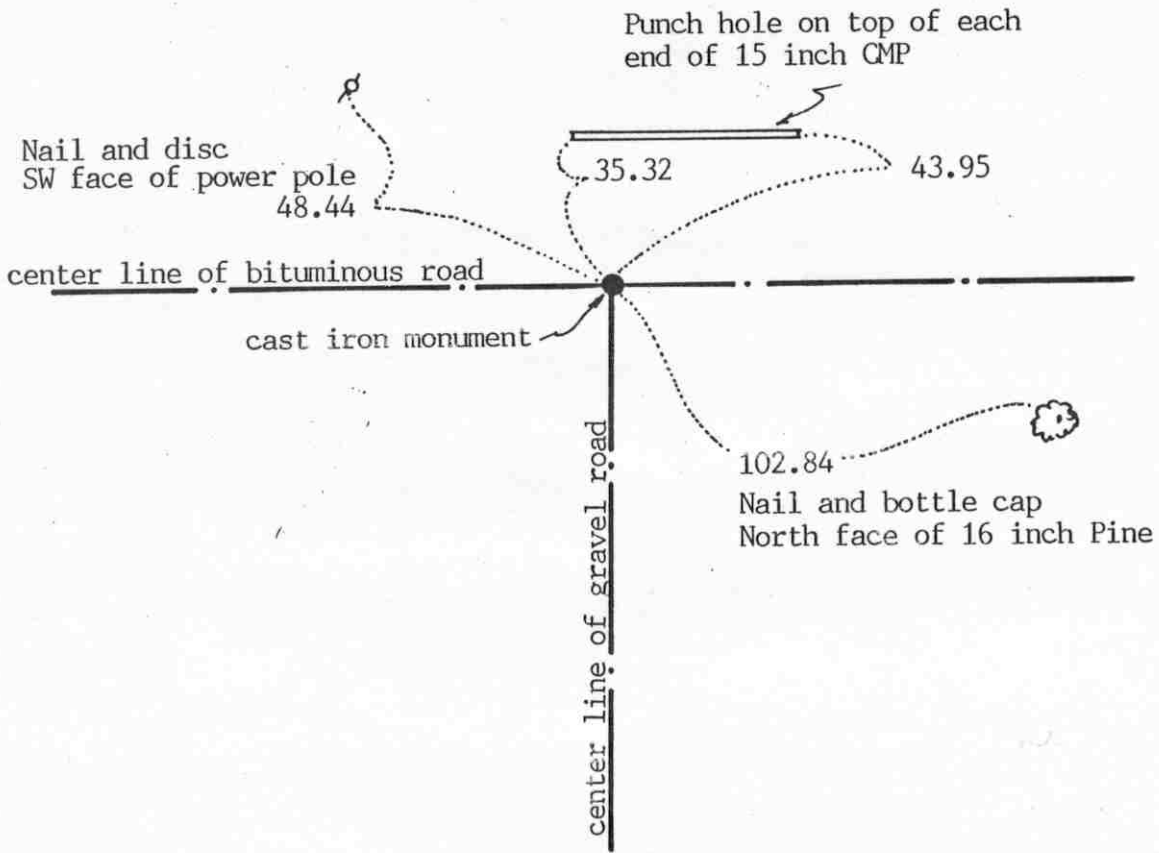
Certificate of Location of Government Corner

SKETCH OF REFERENCE TIES (NO SCALE)



SECTION 21

SECTION 22



Statement of evidence relative to this corner location on sheet 2

I hereby certify that this document was prepared by me or under my direct supervision.

Willard Pellinen

Willard Pellinen
McLeod County Surveyor
License No. 9626

Date January 18, 1994

OFFICE OF THE COUNTY RECORDER
MCLEOD COUNTY, MINNESOTA.

I hereby certify that this document was filed in this office at 9 o'clock A.M. on the 7th day of February, 19 94.

Carmen Poth's Mulder, County Recorder

By Jan Petrick, Deputy

Document No. 257720

EAST QUARTER corner, Section 21, Township 116 North, Range 28 West

Certificate of Location of Government Corner

September, 1856. D.L.Langton of the General Land Office established this corner. He set a post and marked 2 elms for bearing trees.

June 18, 1927. Survey notes by E. L. Higgins show he set the corner half way between the section corners.

June 17, 1974. Dickman Knutson, county surveyor, dug for the corner at the center line intersection of the roads. Down $3\frac{1}{2}$ feet they found a $\frac{3}{4}$ inch diameter iron rod. Knutson tied it off and set a $\frac{1}{2}$ inch diameter iron pipe at the surface of the road.

July 29, 1975. Knutson replaced the iron pipe with a Mcleod County cast iron monument.

December 17, 1993. Checked ties to PK nail which we had previously set over cast iron monument. Monument is deep.

The monument set by Knutson is accepted as marking the location of the government corner. It fits long standing occupation lines, the center line intersection of the roads, and it perpetuates the location of an older monument, the $\frac{3}{4}$ inch iron rod.

NORTHEAST corner, Section 21, Township 116 North, Range 28 West

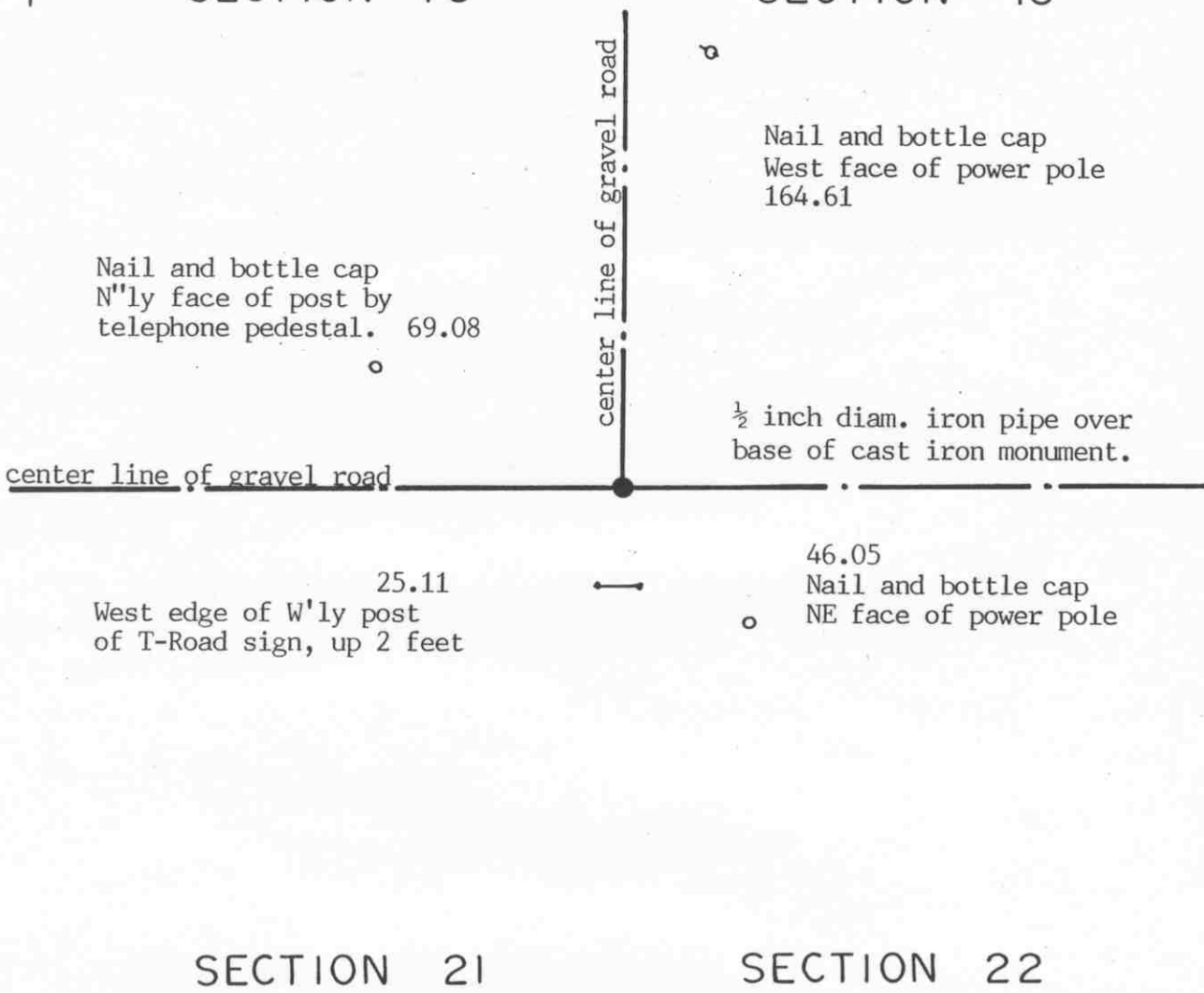
Certificate of Location of Government Corner

SKETCH OF REFERENCE TIES
(NO SCALE)



SECTION 16

SECTION 15



Statement of evidence relative to this corner location on sheet 2

I hereby certify that this document was prepared by me or under my direct supervision.

Willard Pellinen

Willard Pellinen
McLeod County Surveyor
License No. 9626

Date Oct. 11, 1993

OFFICE OF THE COUNTY RECORDER
MCLEOD COUNTY, MINNESOTA.

I hereby certify that this document was filed in this office at 9 o'clock A.M. on the 14th day of October, 1993.

Carmen Estlin Mulder, County Recorder

By _____, Deputy

Document No. 255340

Certificate of Location of Government Corner

September, 1856. D. L. Langton of the General Land Office established this corner. He set a post and marked 4 aspens for bearing trees.

1977. Ed Wosmek, 72 years old and had lived in the Southeast Quarter of Section 9 all his life, said when road was rebuilt 35 years ago a 4 inch diameter iron pipe was found at the corner but it was pulled out. Road was built so the center line intersection was over the corner. Erwin Skorpik, 65 years old and in the Southwest Quarter of Section 15 for 60 years, also said the iron pipe at the corner was pulled out.

June 29, 1977. Dickman Knutson, county surveyor, dug for the corner at the center line intersection but found no evidence of a corner.

July 7, 1977. Knutson set a McLeod County cast iron monument at the center line intersection of the roads and took available reference ties.

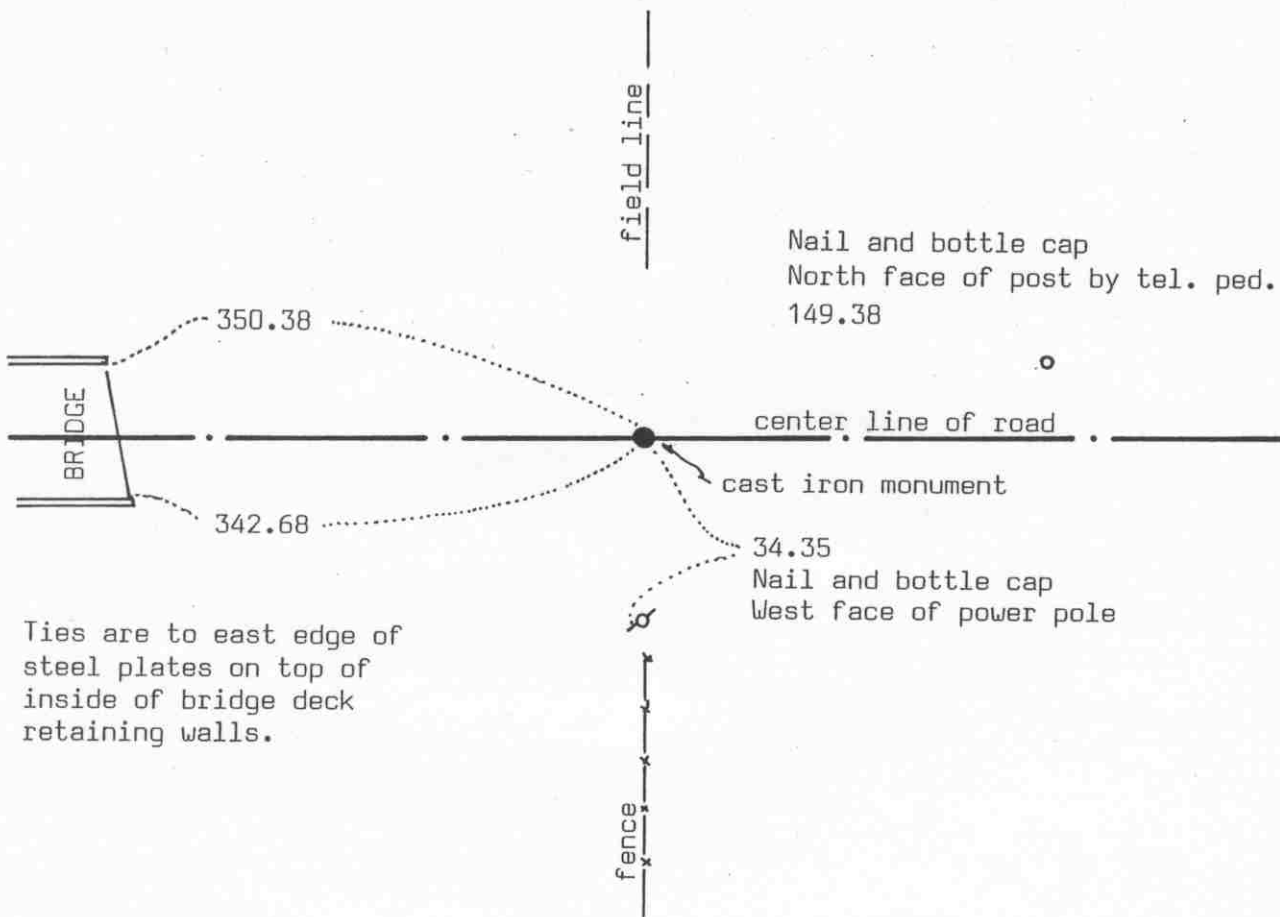
October 8, 1993. We found the top 12 inches of the cast iron monument broken into pieces. We set a $\frac{1}{2}$ inch diam. iron pipe at the corner and took new reference ties.

NORTH QUARTER corner, Section 21, Township 116 North, Range 28 West

Certificate of Location of Government Corner

SKETCH OF REFERENCE TIES
(NO SCALE)

SECTION 16



Ties are to east edge of steel plates on top of inside of bridge deck retaining walls.

SECTION 21

Statement of evidence relative to this corner location on sheet 2

I hereby certify that this document was prepared by me or under my direct supervision.

Willard Pellinen
Willard Pellinen
McLeod County Surveyor
License No. 9626

Date Dec. 20, 1993

OFFICE OF THE COUNTY RECORDER
MCLEOD COUNTY, MINNESOTA.

I hereby certify that this document was filed in this office at 9 o'clock A.M. on the Flat day of January, 1994.

Carmen Helles Mulder, County Recorder

By _____, Deputy

Document No. 257382

NORTH QUARTER corner, Section 21, Township 116 North, Range 28 West

Certificate of Location of Government Corner

September, 1856. D. L. Langton of the General Land Office set a post and marked 2 aspens for bearing trees.

April 1, 1979. We measured the north line of Section 21 and set a temporary north quarter corner along the center line of the east-west road in line with fences north and south.

July 26, 1982. We dug for the corner, John Tupa from Hutchinson with a backhoe. Down $2\frac{1}{2}$ feet we found a 1 inch diameter iron pin. We took available reference ties.

August 18, 1982. We talked with John and Victor Pulkrabek, in the Southeast Quarter of Section 16 and the Northeast Quarter of Section 21. Victor was 62 years old and had lived here all his life. They both said the fences have been there as long as they can remember and have always been accepted as being along the quarter lines. We set a McLeod County cast iron monument at the corner and took additional reference ties. This corner falls about $1\frac{1}{2}$ feet east and $9\frac{1}{2}$ feet north of a lost position for the corner.

October 26, 1993. We found no ties remaining. We found the monument down 12 inches below the surface of the road in good condition. We took new available reference ties.

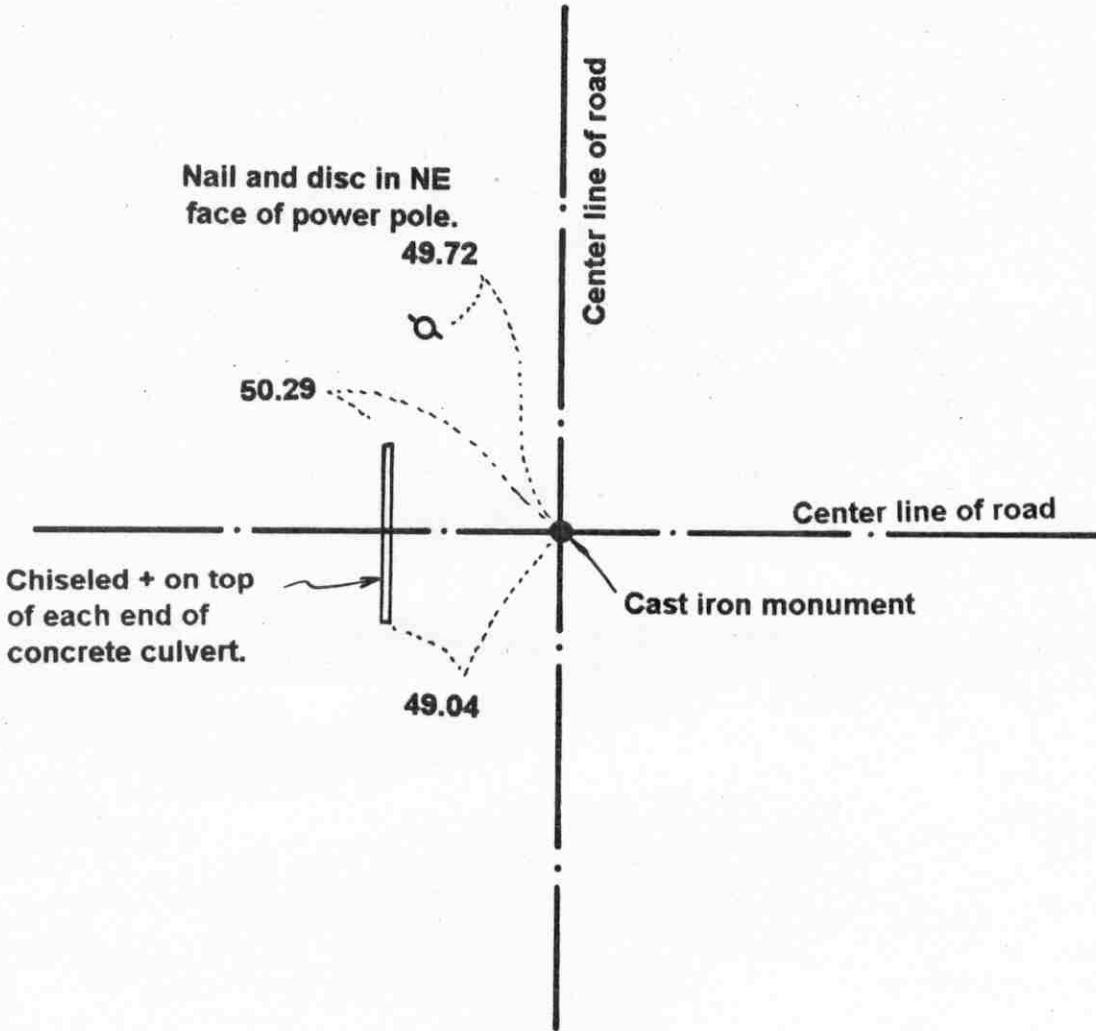
EAST QUARTER corner, Section 22, Township 116 North, Range 28 West

Certificate of Location of Government Corner

SKETCH OF REFERENCE TIES (NO SCALE)

SECTION 22

SECTION 23



Statement of evidence relative to this corner location on sheet 2

I hereby certify that this document was prepared by me or under my direct supervision.

Willard Pellinen
 Willard Pellinen
 McLeod County Surveyor
 License No. 9626
 Date Oct. 9, 1995

OFFICE OF THE COUNTY RECORDER
MCLEOD COUNTY, MINNESOTA.

I hereby certify that this document was filed in this office at 9 o'clock A. M. on the 13th day of October, 1995.

Carman Astlie Guder, County Recorder
 By _____, Deputy
 Document No. 268600

Certificate of Location of Government Corner

September, 1856. D. L. Langton of the General Land Office established this corner. He set a post and marked an 8 inch and a 16 inch oak for bearing trees.

1914. I. C. Christlieb, surveyor, shows a rock at the corner.

June 17, 1974. Dickman Knutson, county surveyor, found a spike at the surface of the road and a rotted wood hub below the spike. County Highway Department survey notes show a hub at the corner in 1938. Knutson took available ties to the hub. This was near the center line intersection of the roads which has been accepted by the adjoining land owners as being the quarter corner.

July 29, 1975. Knutson set a McLeod County cast iron monument at the corner.

This corner is approximately 6 feet north and 6 feet east of being at a lost position for the corner.

May 15, 1995. We checked the reference ties to the monument.

NORTHEAST corner, Section 22, Township 116 North, Range 28 West

Certificate of Location of Government Corner

SKETCH OF REFERENCE TIES
(NO SCALE)



SECTION 15

SECTION 14

Nail and bottle cap
NE face of guy pole
58.82

Nail and bottle cap
SE face of power pole
51.19

Nail and bottle cap
South face of post by
telephone pedestal.
82.96

cast iron
monument.

63.36
Punch hole on top of west
end of 12 inch CMP

center line of gravel road

center line of bituminous road

SECTION 22

SECTION 23

Statement of evidence relative to this corner location on sheet 2

I hereby certify that this document was prepared by me or under my direct supervision.

Willard Pellinen

Willard Pellinen
McLeod County Surveyor
License No. 9626

Date October 11, 1993

OFFICE OF THE COUNTY RECORDER
MCLEOD COUNTY, MINNESOTA.

I hereby certify that this document was filed in this office at 9 o'clock A. M. on the 14th day of October, 19 93.

Carmen Estlie Mulder, County Recorder

By _____, Deputy

Document No. 255341

NORTHEAST corner, Section 22, Township 116 North, Range 28 West

Certificate of Location of Government Corner

September, 1856. D. L. Langton of the General Land Office set a post and marked 4 aspens for bearing trees.

1927. E.L.Higgins found a stone at the corner and he measured 2633 feet to the north quarter corner of Sec. 22.

1938. County Highway Department field notes show they found a brass monument at the corner. This was set by Carlisle Madson, Sr., former county surveyor.

June 1, 1978. McCombs Knutson Associates (Dickman Knutson, county surveyor) dug for the corner and down 2 feet below the road surface they found a 10 inch diameter stone. Below the stone they found an iron pipe with a brass cap. They took reference ties to the pipe and left the pipe in place.

August 2, 1978. Knutson set a spike at the corner and took additional ties.

July 15, 1980. We set a McLeod County cast iron monument at the corner. We measured 2632.16 feet to the north quarter corner of Section 22 compared with 2633 feet by Higgins in 1927.

October 8, 1993. We found the monument in good condition down 4 inches below the surface of the bituminous road.

NORTH QUARTER corner, Section 22, Township 116 North, Range 28 West

Certificate of Location of Government Corner

SKETCH OF REFERENCE TIES
(NO SCALE)



SECTION 15

field line

Nail and bottle cap
West face of 12 inch
box elder, up 3 feet.
41.50

cast iron monument

center line of gravel road

28.44

32.20

131.45

Nail and bottle cap
North face of power pole.

Punch hole on top of each end
of 15 inch CMP, 30 feet long

fence

SECTION 22

Statement of evidence relative to this corner location on sheet 2

I hereby certify that this document was prepared by me or under my direct supervision.

Willard Pellinen

Willard Pellinen
McLeod County Surveyor
License No. 9626

Date October 11, 1993.

OFFICE OF THE COUNTY RECORDER
MCLEOD COUNTY, MINNESOTA.

I hereby certify that this document was filed in this office at 9 o'clock A.M. on the 14th day of October, 1993.

Carman Estelle Mulder, County Recorder

By _____, Deputy

Document No. 255342

Certificate of Location of Government Corner

September, 1856. D. L. Langton of the General Land Office established this corner. He set a post and marked 2 aspens for bearing trees.

June 17, 1974. Dickman Knutson, county surveyor, dug for the corner, John Tupa from Hutchinson with a backhoe. They found no evidence of the government corner.

July 29, 1975. Knutson set a cast iron monument on the center line of the east-west road in line with a fence to the south. This has been accepted by adjoining land owners as being the corner.

October 8, 1993. We found the monument in good condition down 6 inches below the surface of the gravel road.

The monument set by Knutson is accepted as marking the correct location of the quarter corner. It fits long standing occupation lines, the fence, and the road center line.

EAST QUARTER corner, Section 23, Township 116 North, Range 28 West

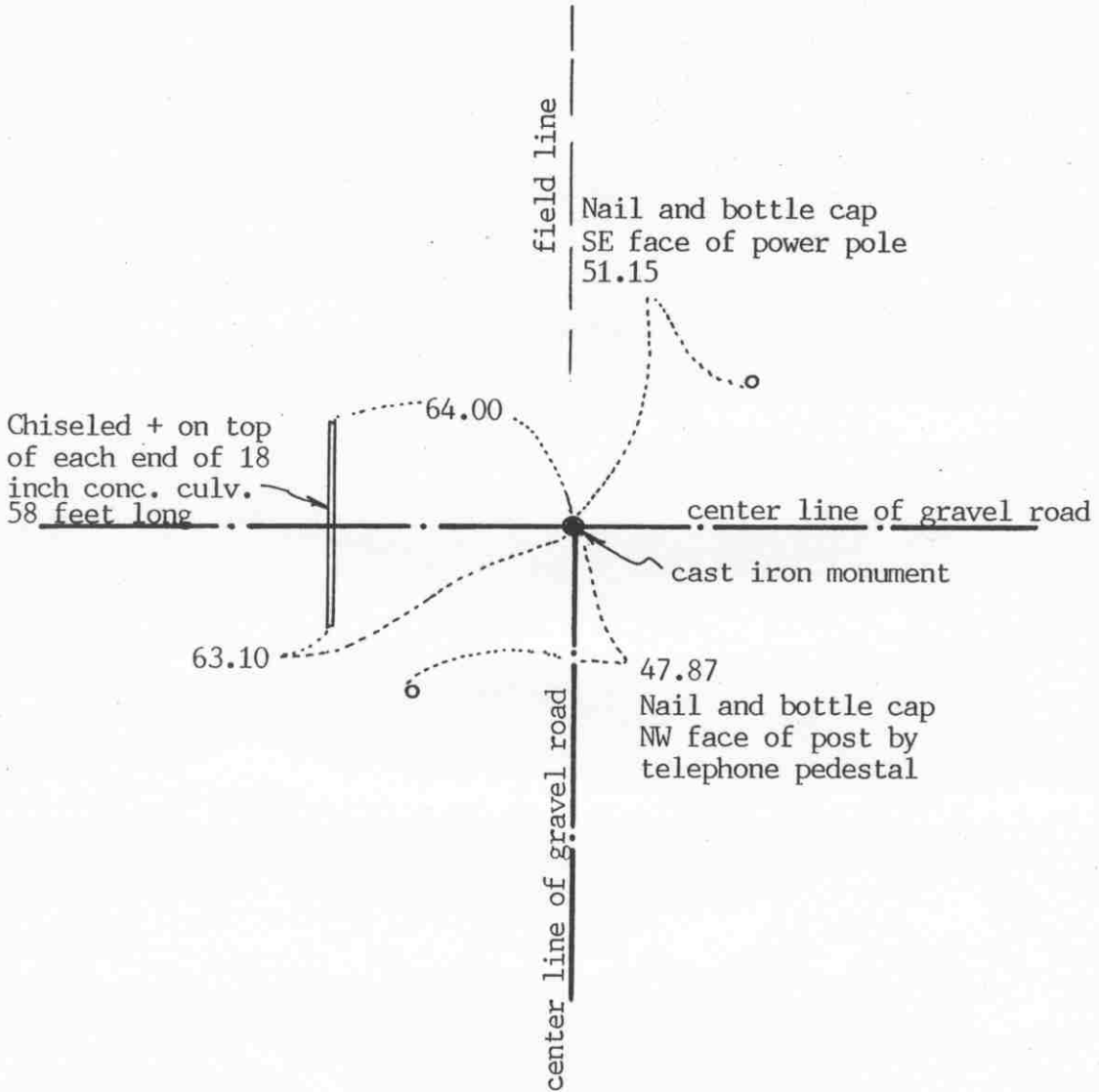
Certificate of Location of Government Corner

SKETCH OF REFERENCE TIES

(NO SCALE)

SECTION 23

SECTION 24



Statement of evidence relative to this corner location on sheet 2

I hereby certify that this document was prepared by me or under my direct supervision.

Willard Pellinen
Willard Pellinen
McLeod County Surveyor
License No. 9626

Date July 26, 1993

OFFICE OF THE COUNTY RECORDER
MCLEOD COUNTY, MINNESOTA.

I hereby certify that this document was filed in this office at 4 o'clock P.M. on the 5th day of August, 1993.

Armin Ostlie Quader, County Recorder
By _____, Deputy

Document No. 253997

Certificate of Location of Government Corner

September, 1856. D.L.Langton of the General Land Office established this corner. He set a post and marked 2 aspens for bearing trees.

1977. Henry Tlutosh, 62 years old, and had lived in the Southwest Quarter of Section 24 all his life, said a stone was found at the corner when the road was rebuilt about 30 years ago.

June 9, 1977. McCombs Knutson Associates (Dickman Knutson, county surveyor) excavated for the corner, John Tupa from Hutchinson with a backhoe. Down 2 feet below the road surface they foun a spike. They tied it off and dug more and down $2\frac{1}{2}$ feet below the surface they found a stone, directly below the found spike.

July 8, 1977. Knutson set a spike at the corner and took additional reference ties.

April 7, 1978. Knutson set a McLeod County cast iron monument at the corner.

June 11, 1993. We found the monument in good condition down 8 inches below the road surface and took new ties.

The monument set by Knutson is accepted as marking the correct position of the quarter corner. It fits occupation lines, the center line of the road) and it perpetuates the location of an older monument, the stone.

NORTHEAST corner, Section 23, Township 116 North, Range 28 West

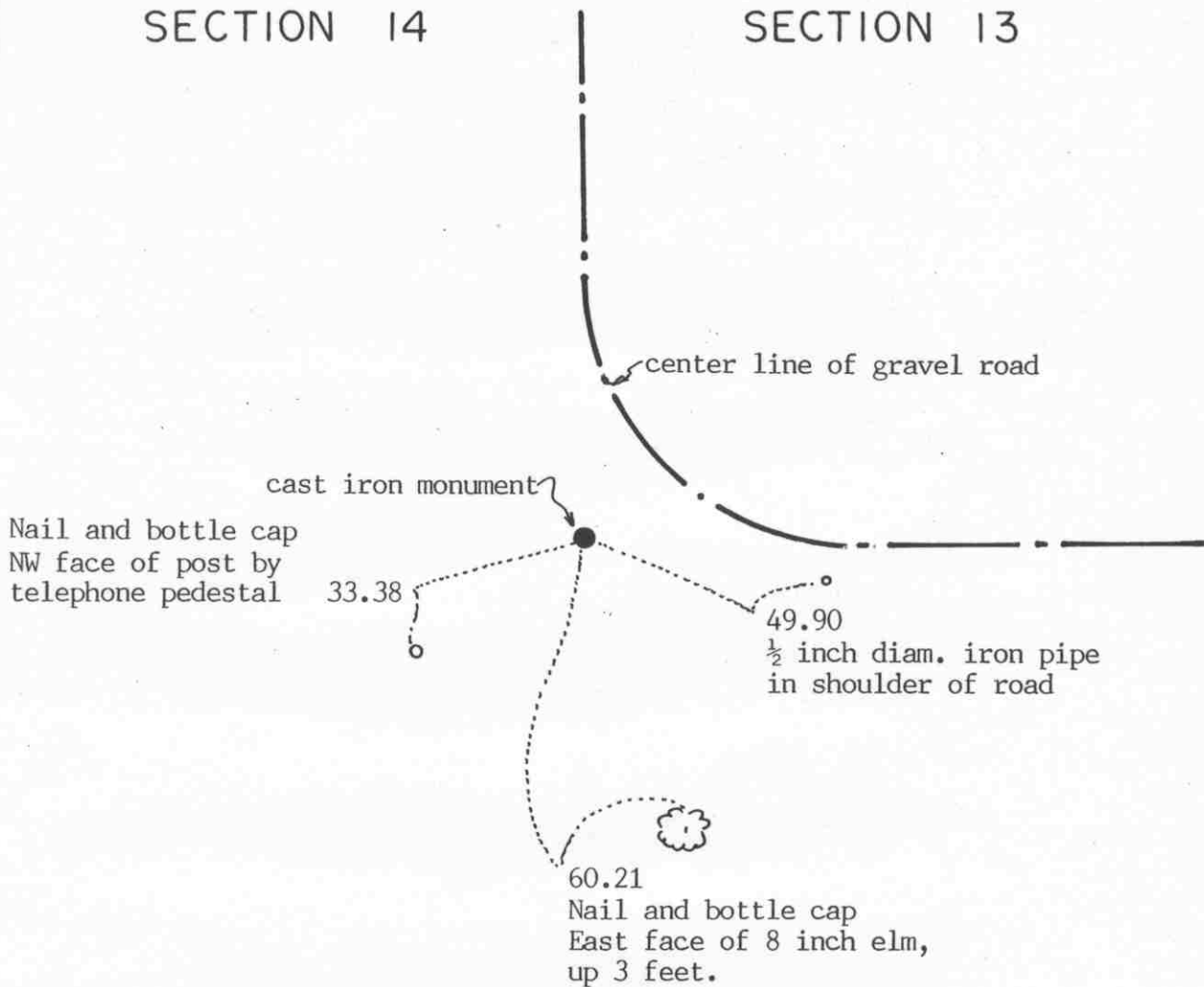
Certificate of Location of Government Corner

SKETCH OF REFERENCE TIES
(NO SCALE)



SECTION 14

SECTION 13



SECTION 23

SECTION 24

Statement of evidence relative to this corner location on sheet 2

I hereby certify that this document was prepared by me or under my direct supervision.

Willard Pellinen

Willard Pellinen
McLeod County Surveyor
License No. 9626

Date October 11, 1993

OFFICE OF THE COUNTY RECORDER
MCLEOD COUNTY, MINNESOTA.

I hereby certify that this document was filed in this office at 9 o'clock A. M. on the 14th day of October, 1993.

Carmen Botlie Mulder, County Recorder

By _____, Deputy

Document No. 255343

NORTHEAST

corner, Section 23, Township 116 North, Range 28 West

Certificate of Location of Government Corner

September, 1856. D. L. Langton of the General Land Office set a post and marked 3 aspens and a cherry tree for bearing trees.

June 29, 1977. Dickman Knutson, county surveyor, dug for the corner. (John Tupa from Hutchinson with a backhoe) They found a stone 10 inches square, 2 feet long, set on end, top of stone was down 1 foot below the surface. They moved the stone to make room for the monument.

July 8, 1977. Knutson set a spike at the corner and took additional reference ties.

April 7, 1978. Knutson set a McLeod County cast iron monument. This corner falls very close to being the center line P.I. of road to the east and north.

October 8, 1993. We found the monument in good condition down 6 inches below the surface of the gravel road. We took new reference ties.

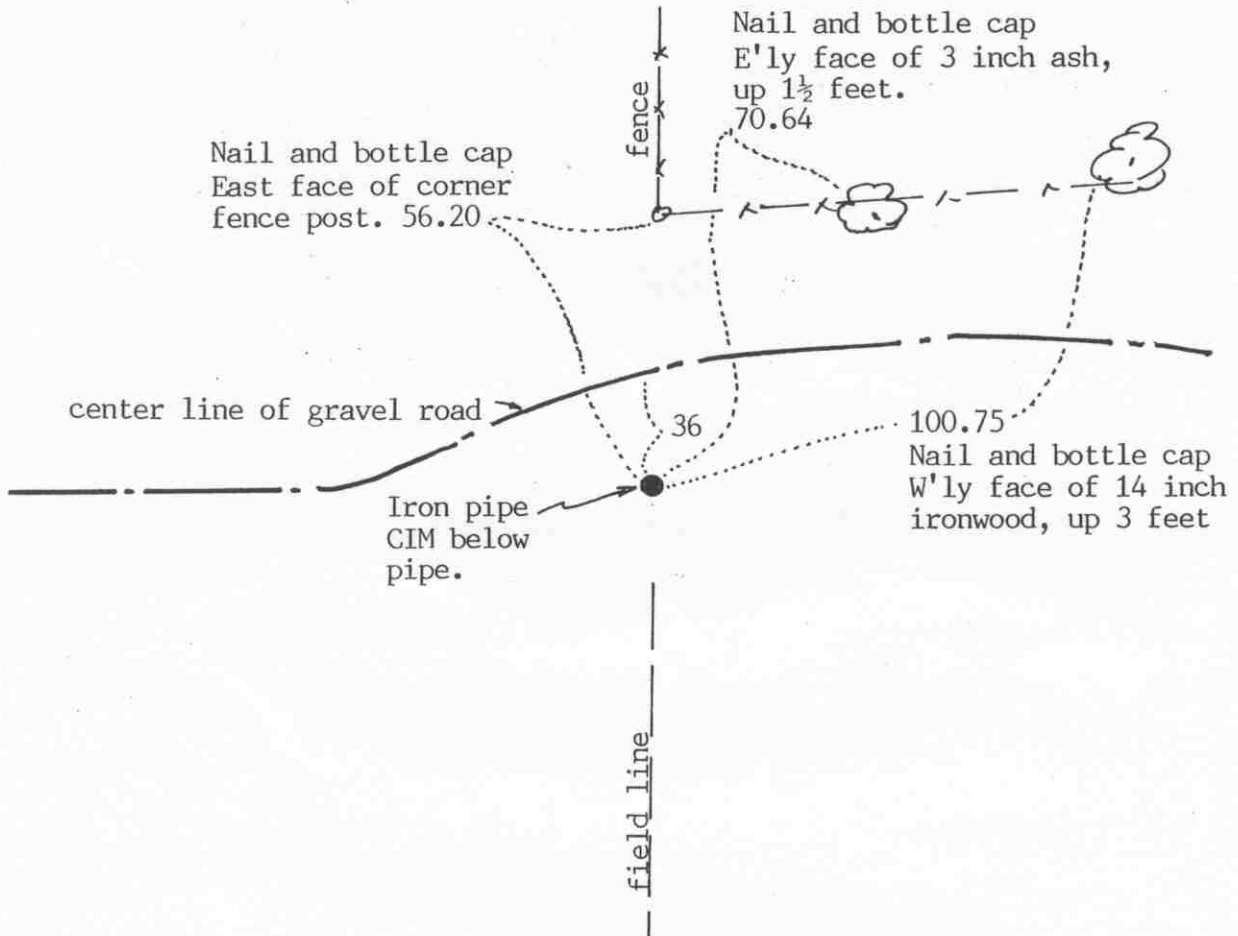
The monument set by Knutson is accepted as marking the correct position of the section corner. It fits occupation lines and it perpetuates the location of an older monument.

NORTH QUARTER corner, Section 23, Township 116 North, Range 28 West

Certificate of Location of Government Corner

SKETCH OF REFERENCE TIES
(NO SCALE)

SECTION 14



SECTION 23

Statement of evidence relative to this corner location on sheet 2

I hereby certify that this document was prepared by me or under my direct supervision.

Willard Pellinen

Willard Pellinen
McLeod County Surveyor
License No. 9626

Date October 11, 1993

OFFICE OF THE COUNTY RECORDER
MCLEOD COUNTY, MINNESOTA.

I hereby certify that this document was filed in this office at 9 o'clock A. M. on the 14th day of October, 1993.

Carmen Estelle Mulder, County Recorder

By _____, Deputy

Document No. 255344

Certificate of Location of Government Corner

September, 1856. D.L.Langton of the General Land Office established this corner. He set a post and marked 4 aspens for bearing trees.

April 7, 1977. Virgil Emme, 64 years old and had lived in the Southeast Quarter of Section 14 all his life, stated the corner is on the easterly extension of the center line of the gravel road and on the southerly extension of a fence which is north of the road. We measured the north line of Section 23 and found a stone, 8 inches by 6 inches at the location as testified to by Mr. Emme. Mr. Eed Mroz, 72 years old also said this is the correct location of the quarter corner. He said the fence has been there at least 70 years.

April 10, 1978. We replaced the stone with a McLeod County cast iron monument. We set the monument down 2 feet and set a $\frac{1}{2}$ inch diameter iron pipe over it and took available ties.

October 8, 1993. We found the iron pipe in good condition down 14 inches below the surface. We took new reference ties.

EAST QUARTER corner, Section 24, Township 116 North, Range 28 West

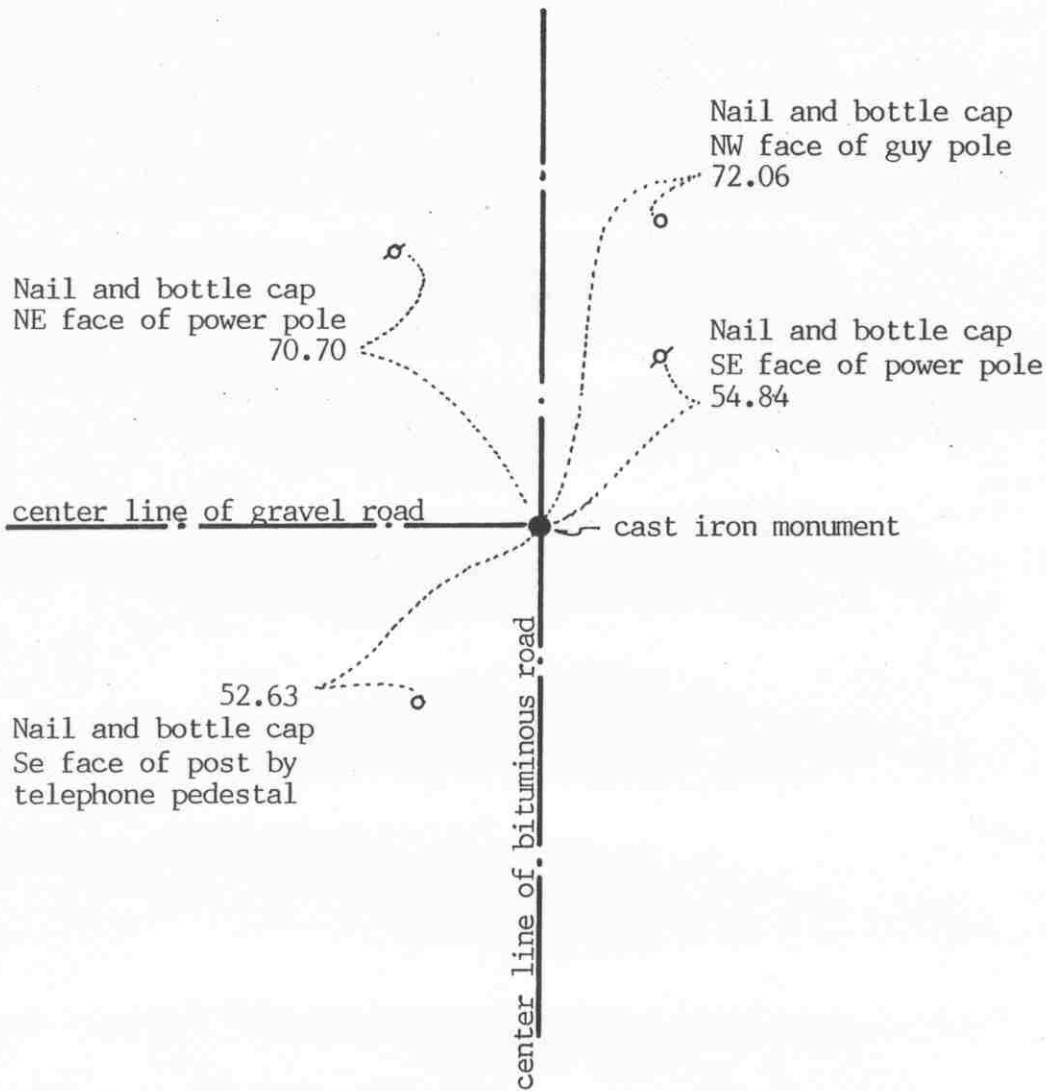
Certificate of Location of Government Corner

SKETCH OF REFERENCE TIES

(NO SCALE)

SECTION 24 T. 116, R. 28

SECTION 19 T. 116, R. 27



Statement of evidence relative to this corner location on sheet 2

I hereby certify that this document was prepared by me or under my direct supervision.

Willard Pellinen

Willard Pellinen
McLeod County Surveyor
License No. 9626

Date July 26, 1993

OFFICE OF THE COUNTY RECORDER
MCLEOD COUNTY, MINNESOTA.

I hereby certify that this document was filed in this office at 4 o'clock P.M. on the 5th day of August, 1993.

Carmen Patricia Muelde, County Recorder

By _____, Deputy

Document No. 253998

Certificate of Location of Government Corner

1855. John Ryan of the General Land Office established this corner. He set a post and marked 2 aspens for bearing trees.

December, 1968. McCombs Knutson Associates (Dickman Knutson, county surveyor) measured the east line of Section 24 and set a temporary quarter corner on the center line intersection of the roads.

1969. Knutson dug for the corner and found an iron pin down 1 feet below the surface of the road. They replace the iron pin with a McLeod County cast iron monument and took available reference ties.

July 23, 1987. We found the monument in good condition down 4 inches below the bituminous surface, and took new ties.

November, 1990. We measured the east line of Section 24 and found the monument to be 5.55 feet north and 3.36 feet east of a lost position for the corner.

March 3, 1993. We checked the reference ties to the corner.

The monument set by Knutson is accepted as marking the location of the quarter corner. It fits occupation lines, the center lines of the roads and it perpetuates the position of an older monument, the iron pin.

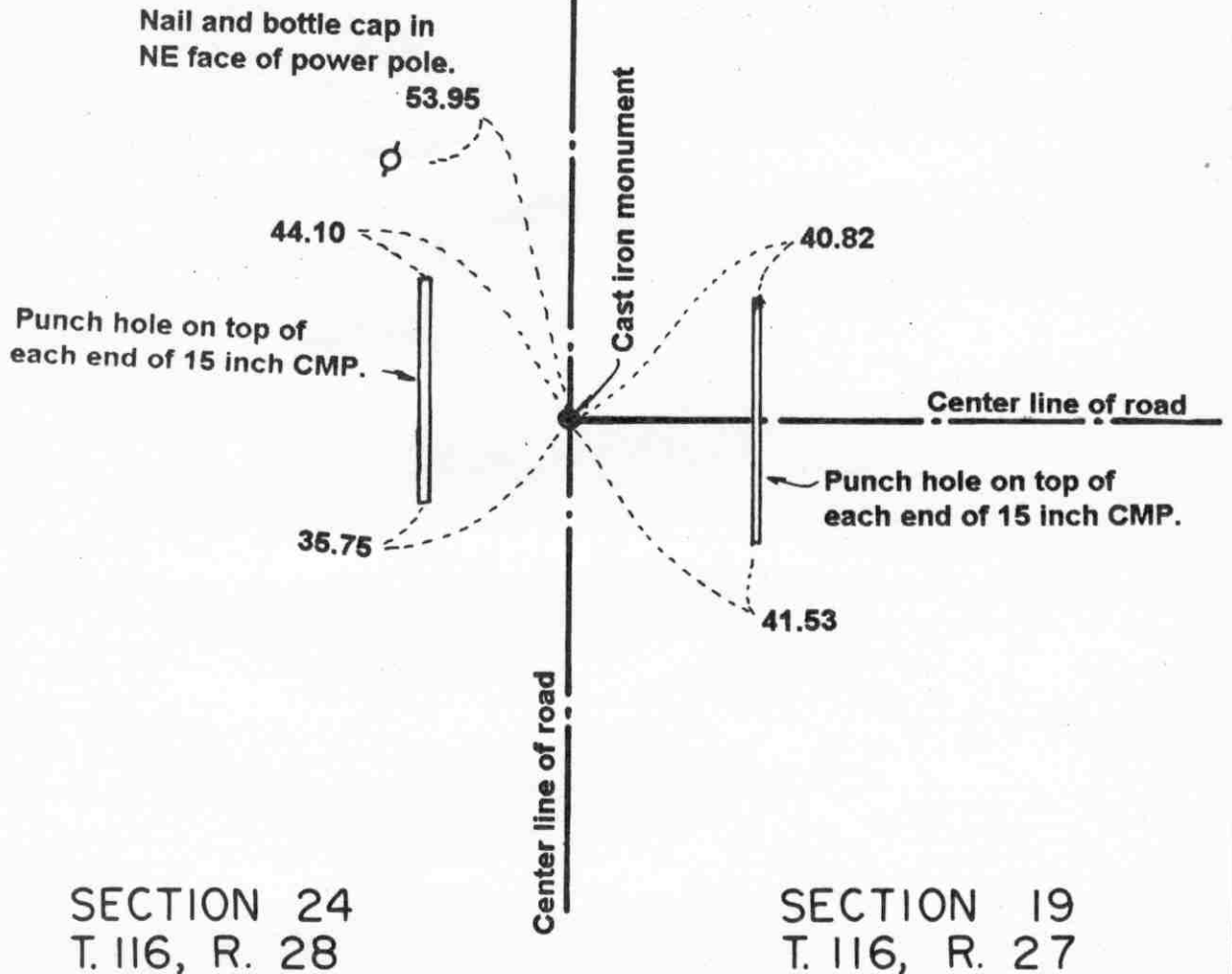
NORTHEAST corner, Section 24, Township 116 North, Range 28 West

Certificate of Location of Government Corner

SKETCH OF REFERENCE TIES
(NO SCALE)

SECTION 13
T. 116, R. 28

SECTION 18
T. 116, R. 27



SECTION 24
T. 116, R. 28

SECTION 19
T. 116, R. 27

Statement of evidence relative to this corner location on sheet 2

I hereby certify that this document was prepared by me or under my direct supervision.

Willard Pellinen
Willard Pellinen
McLeod County Surveyor
License No. 9626

Date Oct. 9, 1995

OFFICE OF THE COUNTY RECORDER
MCLEOD COUNTY, MINNESOTA.

I hereby certify that this document was filed in this office at 9 o'clock A. M. on the 13th day of October, 1995.

Armenia Estlin Miller, County Recorder

By _____, Deputy

Document No. 268601

NORTHEAST _____ corner, Section 24, Township 116 North, Range 28 West

Certificate of Location of Government Corner

1855. John Ryan of the General Land Office established this corner. He set a post and marked an oak, 2 elms and a linden for bearing trees.

County Highway Department field notes show an iron pin at the corner.

1969. Dickman Knutson, county surveyor, found an iron pin at the corner and replaced it with a McLeod County cast iron monument and took available reference ties.

July 23, 1987. All the reference ties had been destroyed. We found the monument in good condition and took new ties.

June, 1994. We checked the reference ties.

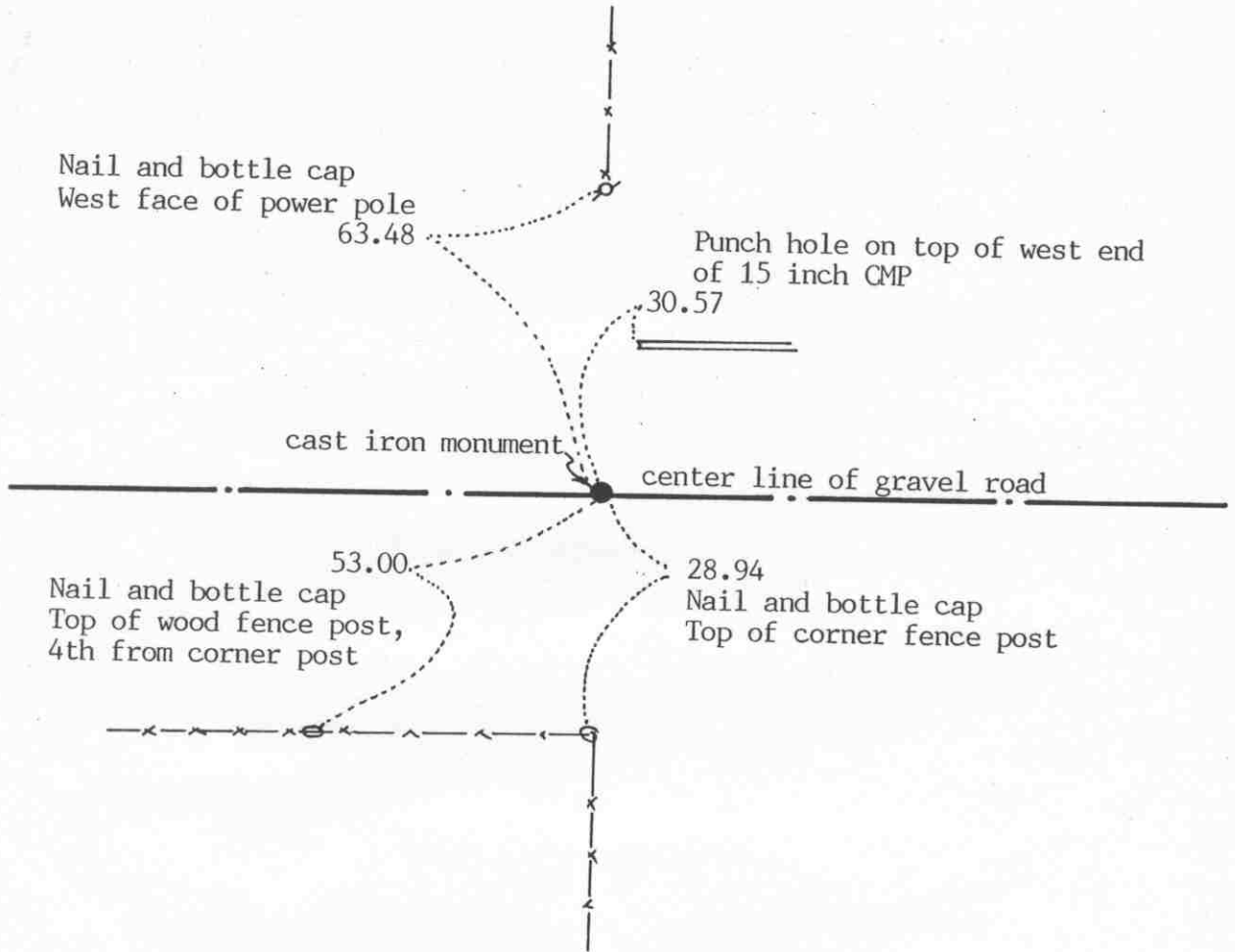
NORTH QUARTER corner, Section 24, Township 116 North, Range 28 West

Certificate of Location of Government Corner

SKETCH OF REFERENCE TIES

(NO. SCALE)

SECTION 13



SECTION 24

Statement of evidence relative to this corner location on sheet 2

I hereby certify that this document was prepared by me or under my direct supervision.

Willard Pellinen

Willard Pellinen
McLeod County Surveyor
License No. 9626

Date Oct. 11, 1993

OFFICE OF THE COUNTY RECORDER
MCLEOD COUNTY, MINNESOTA.

I hereby certify that this document was filed in this office at 9 o'clock A.M. on the 14th day of October, 1993.

Carmin Ottilie Mulder, County Recorder

By _____, Deputy

Document No. 255345

Certificate of Location of Government Corner

September, 1856. D. L. Langton of the General Land Office established this corner. He set a post and marked 2 aspens for bearing trees.

June 29, 1977. Dickman Knutson, county surveyor, dug for the corner. (John Tupa from Hutchinson with a backhoe) They found a 2 inch diameter wood post down 4 feet below the surface of the road. They tied it off and left it in place. This was on the center line of the east west road in line with fences to the north and south. These fences have been accepted as being on the north-south quarter lines of Sections 24 and 13 by adjoining property owners.

July 8, 1977. Knutson set a spike at the corner and took additional ties.

April 10, 1978. Knutson set a McLeod County cast iron monument at the corner. This monument is within a few tenths of a foot of being halfway between the section corners and within 2 feet of being on line between the section corners.

The monument set by Knutson is accepted as marking the correct location of the quarter corner. It fits occupation lines, perpetuates the location of an older monument (the wood post) and it very close to being on line and split between the section corners.

October 8, 1993. We found no ties remaining to the corner. We found the monument in good condition down 8 inches below the surface of the gravel road. Took available ties.